



VXS-115 Veterinary X-Ray System



Medical Imaging Group



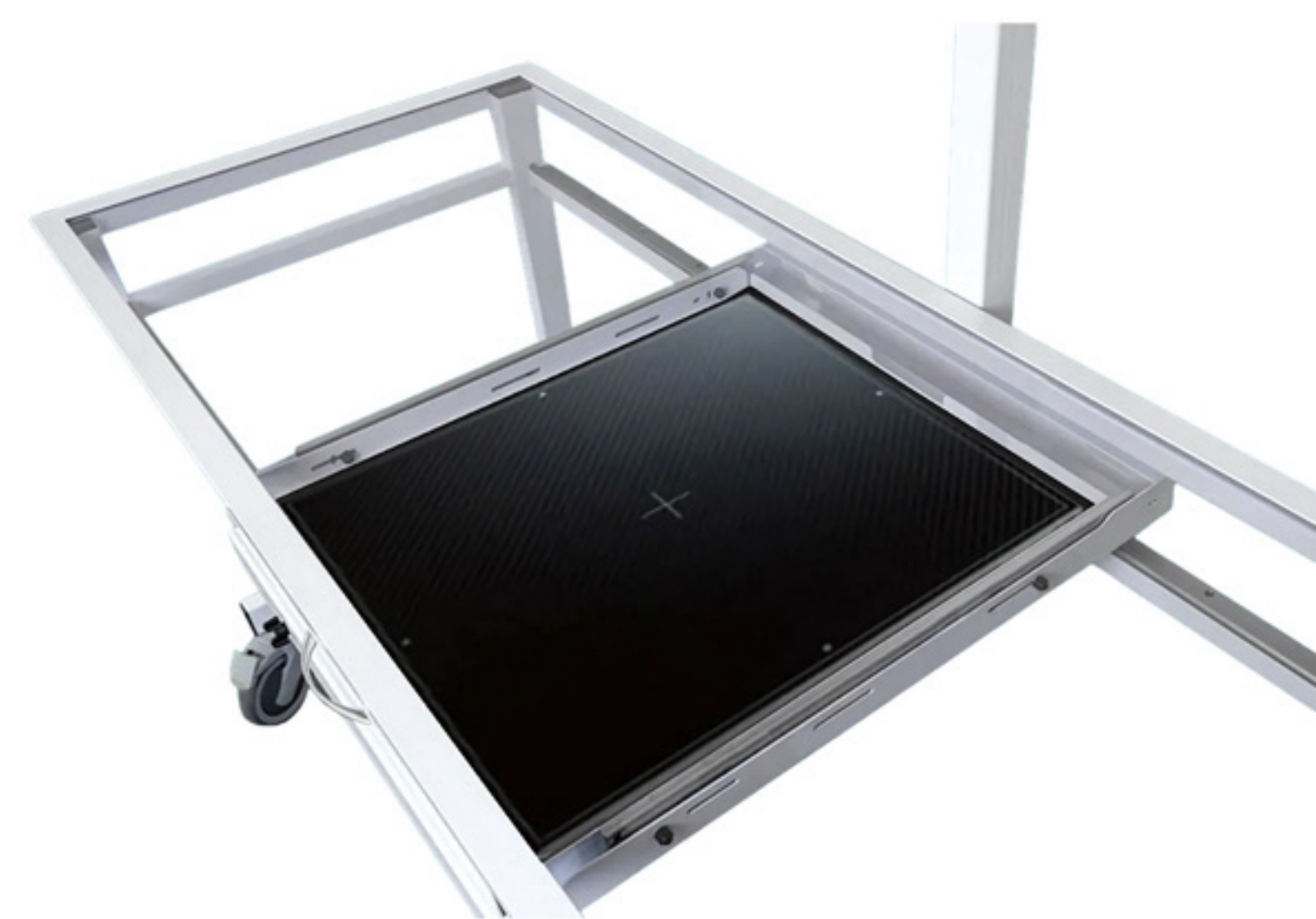
VXS-115

Veterinary X-Ray System

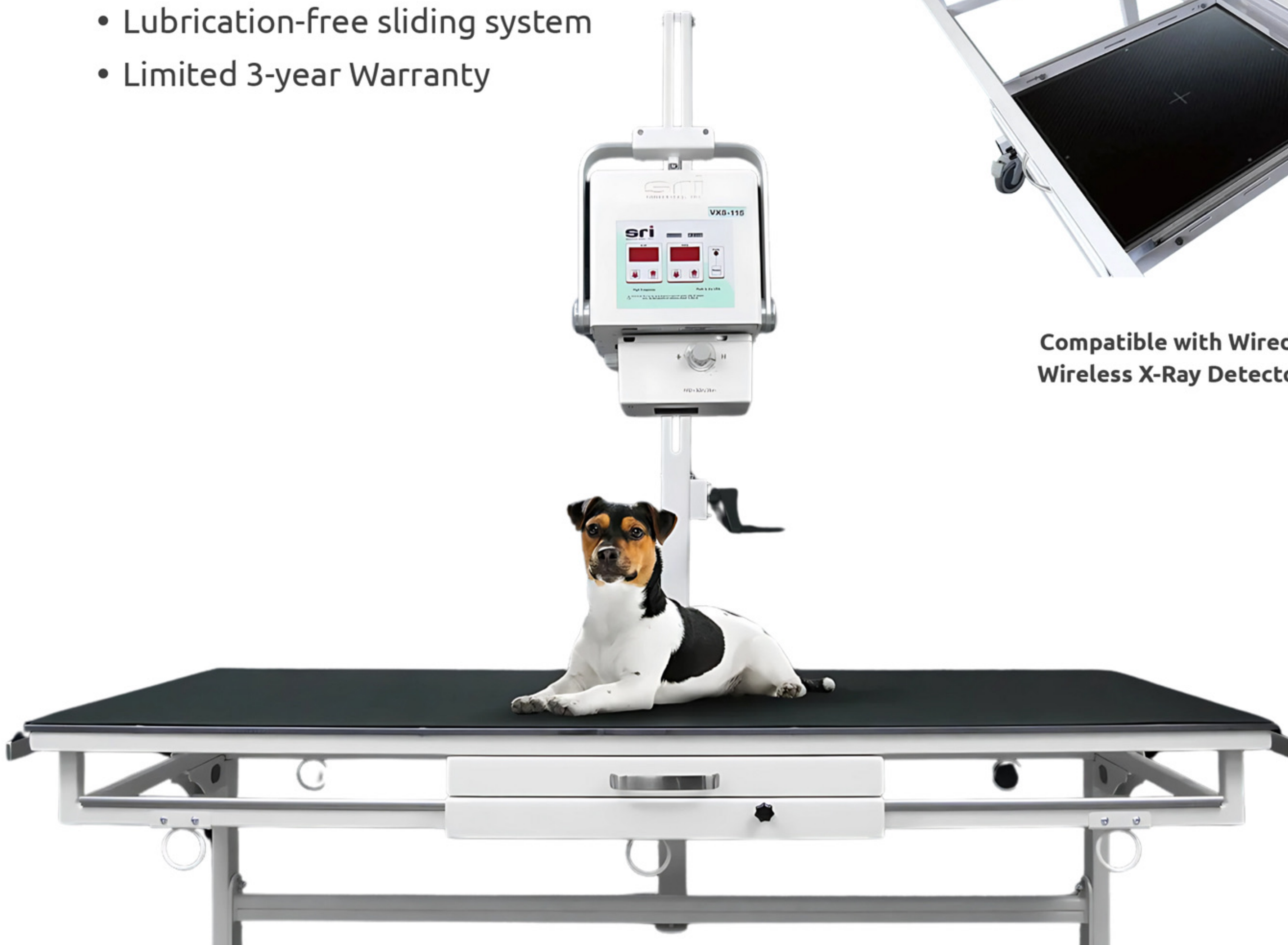
The VXS-115 Veterinary Digital X-Ray System is a high quality solution for reliable and convenient veterinary imaging. With flexible mobility, easy to use digital X-Ray software, and compatibility for equine and bovine applications, this system is designed to meet all your veterinary needs.

Key Advantages

- Plugs into a standard wall outlet
- Easy to move around to clean or relocate
- Lubrication-free sliding system
- Limited 3-year Warranty



Compatible with Wired/
Wireless X-Ray Detector



Specifications

• Generator

High frequency resonant inverter 1.5 kW

- Input Voltage:** Input Voltage: 115/230 VAC, 50/60hZ
- kVp Range:** 40-100 kVp, adjustable in 1 KV increments closed loop regulation
- mA Range:** 15 Fixed. Constant mA, Independent of kV or time
- mAs Range:** 0.15-60
- Indicators:** Digital display of kVp and mAs. X-Ray, Ready & Fault indicators.

• Exposure Switch

Detachable two-position

• X-Ray Tube

Stationary Anode 100kVp

- Filtration:** 0.8 mm Al equivalent at 80 kV
- Target Material:** Tungsten
- Anode Capacity:** 20.000 HU Storage
- Focal Spot:** 1.0 mm
- Target Angle:** 15°

• Collimator

Ralco R 72 S DHHS

- Laser Crosshairs:** 1.0 mm
- Tape Measure:** SID Measurement
- Inclinometer:** Angle Measurement

• Footswitch

Optional footswitch assembly for taking hands free exposures



Can be moved up, down or sideways along with the panel



MDSAP / ISO 13485 Certified




Specifications are subject to change without notice.

Names of companies and/or products appearing in this document are trademarks and/or registered trademarks of the respective companies.

Scan the QR Code &
Check Our Website




Nuon Imaging Inc.



-  (866) 455-3050
-  info@nuonimaging.ca
-  www.nuonimaging.ca

Nikki Health Solutions Inc.



-  (855) 500-5040
-  info@nikki.health
-  www.nikki.health